

BurrenLIFE Project

burren
LIFE

Annual Newsletter



Issue No. 3

Winter 2007/Spring 2008

Introduction

Welcome to the third annual newsletter of the BurrenLIFE Project (BLP) covering the work of the BLP in 2007. Previous annual newsletters published in 2005 and 2006, as well as a wide range of project information, reports and updates, are available on the BLP website – www.burrenlife.com.

What is BurrenLIFE?

The BLP derives its name from two sources: firstly the Burren region which is the focus for the work of the BLP, and secondly the European Commission LIFE Nature fund, a European nature conservation fund from which the BLP receives 75% of its overall funding. The BLP is a five year project with a €2.23 million budget. The project offices, based in the Old School House, Carron, house the three full-time project staff (Dr. Brendan Dunford, Dr. Sharon Parr and Mr. Ruairí Ó Conchúir) and is also the principal base for Dr James Moran who is seconded from Teagasc.

The Burren – An Exceptional Cultural and Heritage Landscape

The Burren is a place apart. Extending over c.550 sq km of Ireland's mid-western coast, this dramatic limestone landscape has been shaped over many millennia by glaciation, water solution and human activity to form stunning pavements, turloughs and grasslands. The exposed limestone slabs make an excellent building material which has been exploited by humans over the past 6,000 years to create an unsurpassed archaeological legacy of megalithic tombs, stone forts and walls. But for many people it is the flora of the Burren which is the principal attraction: from gentians to orchids, cowslips to cranesbills, the Burren is unrivalled in terms of the profusion of its flora, and the rich fauna that results.

A small area of the Burren is protected as a National Park, but most of the Burren is designated as a 'Special Area of Conservation' in light of its ecological wealth. The Burren is thus an important part of the European wide Natura 2000 network of sites of high conservation value, protected by European law. Ireland has a moral and legal obligation to ensure that this legacy is maintained for future generations to enjoy. This is the ultimate aim of the BurrenLIFE Project.

Farming for Conservation

What many people may not appreciate about the Burren is that, as well as being an important heritage landscape, it is also home to a number of communities who, over many generations, have successfully farmed the Burren's rocky hills. Farming activity has mainly focused on cattle, sheep and goats. The extensive, low input farming systems practiced by these farmers helped preserve the Burren heritage, particularly from the threat of scrub (mainly hazel and blackthorn) encroachment. In addition, Burren farming practices such as winter grazing have been proven to be key to the survival of the profusion of plant and insect life in the region. Today, through the BLP, past farming practices are informing the best methods and approaches to protect the outstanding heritage of the Burren into the future.

Working towards a brighter Burren future

The BLP works closely with 20 LIFE "monitor farms" in the Burren to look at ways in which these farms might best be managed so that they can continue to produce food of exceptional quality while protecting their extraordinary heritage. Almost 40 different project actions are being undertaken by the Project, including developing new feeding and grazing systems, removing scrub from flower-rich grassland, restoring internal walls and improving water supplies and site access. Fittingly, most of this work is carried out by the farmers themselves, the true custodians of the Burren. A detailed analysis of the environmental, socio-economic and agricultural impacts of these actions is also undertaken in order to develop a costed blueprint for future farming in the region.

Working hand in hand with the farmers of the Burren, and with the support of the Project partners – NPWS, IFA and Teagasc – the BLP are confident that a bright future can be secured for the Burren, its people, and for all those who love this special place.



Photo No. 1 & 2



Update on Project Actions

What Farm Systems Are Included

The BLP works with 20 Burren farms which cover an area of 3,097ha, (2,485ha of SAC). All the main farming systems – suckler beef (10), drystock (2), dairying (2), mixed (cattle and sheep) (6) – are represented. Four organic farmers are participating, and three of the farm managers are female. 12 farmers are full-time, the remaining 8 are part-time farmers. 16 of the farmers are currently in REPS. The average farm size is 155Ha, ranging from 40ha to 448ha. The average whole farm stocking rate is 0.43 livestock unit per hectare (LU/ Ha) but this ranges from 0.19–0.81 LU/ha. Ecologically, the selected farms represent a full range of habitats and the conservation status of these habitats ranges from favourable to very unfavourable, with some areas almost completely overgrown with scrub, others overgrazed and some undergrazed.

As each one of these farms is different, a unique Farm Management Plan (FMP) has been developed to accommodate this diversity. The FMP describes each farm in detail, using pictures and text to convey the agricultural and conservation value of the farm. The FMP is designed to be flexible and not to be prescriptive. Each FMP is reviewed twice yearly as feedback emerges. The plans also contain a list of actions to be undertaken, including recommendations on stocking and feeding on winterages. All plans and actions are developed in close consultation with the farmer. Some of the main actions undertaken on BLP farms are listed below.

Improving Access



Photo No. 3

The Burren terrain is very rough, most of it accessible only on foot. This causes considerable difficulty for many time-pressed part time farmers, particularly where animals are sick or injured, or when cows are approaching calving in the dark evenings of early Spring. Bulldozing tracks to

provide access causes unacceptable damage to priority habitats such as pavements and grasslands.

The BLP approach to this dilemma is to pilot a system of best practice. A needs analysis of each situation takes place and if a real need is evident, then a route of least damage is defined. Derogations are secured from the relevant (wildlife, monuments and agriculture) authorities and stringent conditions are laid out. These include 'minimal impact' construction and the use of local materials such as limestone chip. Trial access routes have been built on 6 farms, proving very cost effective and useful for both the farmer and livestock.

Controlling Scrub



Photo No. 4

The manner in which hazel and blackthorn scrub have encroached over a large area of the Burren in recent times has given cause for much concern. Experience from other countries would suggest that early intervention is essential if the

important balance between scrub and other habitats is retained. While recognising the significant ecological value of scrub, it is important to remember that the habitats it is replacing are very rare, and that the threat to archaeology is also considerable.

The aim of the BLP in this regard is to ascertain what are the most effective methods of removing scrub, where resources should be targeted, and what will be the cost. To date, the BLP have spent over €200,000 on scrub work, employing over 40 local contractors. Over 50ha of land have been impacted upon on 19 of the 20 project sites. Most importantly, a great deal of practical information has been gained through the careful monitoring of all scrub work. Once this is complete, accurate costings and recommendations on methods to be used will be made available.

Rebuilding Walls



Photo No. 5

The stone wall is one of the most characteristic features of the Burren. Walls as old as 4,000 years cover much of the southern Burren. Magnificent double stone walls define town-land boundaries, while single stone walls ascend and descend almost every hill.

All of these walls once performed an important function. Internal boundary walls were critically important to manage stock and land, usually dividing a farm or winterage in order that targeted grazing could take place. The BLP, recognising the importance of grazing to sustain ecology, have employed local farmers to restore internal boundaries on over 15 project farms. Already this has had a marked impact on grazing, but also in making herding of livestock much easier. The use of skilled local labour for this work has meant a high standard of workmanship and has linked conservation, farming and local communities. This work has also imputed significant resources into the local economy.

Animals need minerals and vitamins too

Correct mineral and vitamin balances are essential for animal health, improving immunity to disease and maintaining fertility. Ongoing forage and blood analyses on BLP farms has highlighted the need for mineral and vitamin supplementation for animals grazing Burren winterages. As a result the BLP concentrate feed has been improved to include the full recommended daily allowances of minerals and vitamins for a suckler cow. Over 100 tonnes of BLP ration was fed on BurrenLIFE farms last winter and early indications suggest that this is proving to be a very cost effective alternative to silage feeding. Farmers have reported high satisfaction ratings with the feed and have noted the improved movement of animals around the winterage leading to better grazing. A recent meeting with vets from the Burren region highlighted the potential animal health benefits from switching from silage to concentrate feeding, and noted the general good health and calving success of overwintered animals.

Water, water everywhere but ne'er a drop to drink!

The karst nature of the Burren means that water is often in short supply in the region, as most of the water flows underground and in a very unpredictable manner. Water provision is a huge animal health and welfare issue for farmers, and indeed it is thought that the whole tradition of winter grazing in the Burren came about due to the lack of water in summertime. A range of solutions – such as rainwater harvesters – were employed by farmers to water their stock in the past. Looking to the future, provision of water to ensure animals maintain species-rich grasslands will be critical. This has been brought home in recent times by droughts in the Burren which have resulted in farmers being forced to remove cattle from the Burren prematurely, restricting required grazing levels. The BLP has responded to this challenge by funding a range of solutions – from using 'hydram pumps', piping and tanks, to cleaning out old springs and walling off new ones.

Monitoring and Data Management

The need for monitoring

The main aim of the BLP is to develop a blueprint for sustainable farming in the Burren, one that meets the needs of farming and conservation. Accurate information on the effectiveness and cost of all actions of this blueprint will be critical in determining its future implementation. To meet this need, the BLP is undertaking a rigorous programme of agricultural, environmental and socio-economic monitoring.

Ecological Monitoring

Dr. Sharon Parr handles the ecological monitoring work for the BLP. This entails a detailed analysis of the impact of actions on the priority habitats of the Burren. By looking closely at the distribution and frequency of plant species at project sites and monitoring any changes, it is possible to determine whether or not new grazing and feeding regimes are benefiting the Burren flora. Though such changes in flora do take time, already there are indications that BLP actions are resulting in increased grazing levels. This is helping to reduce the litter layer in grasslands, thus fostering greater levels of plant species diversity. The monitoring work also includes looking at a range of scrub treatments and assessing their effectiveness and cost. Again there are some promising results at this early stage, in spite of the high cost and challenge involved in removing scrub from remote locations.

The Burren - A Home of Rare Insects

Thousands of insects were collected and documented by a Trinity-led project looking at insect diversity in calcareous grasslands across Ireland. A number of BurrenLife sites were included in this survey. The insects were collected using tent-like flight traps and jars in the ground. Hoverflies, wasps, and moths were an important component of the Burren sites indicating good habitat quality and an abundance of flowers. Some interesting spider species were collected that rely on ants as their main food source. These spiders are rare elsewhere in Ireland and have not previously been recorded from the Burren. Overall, the rare insects and spiders require short grass so that they can warm up in the sun. Any shade due to scrub encroachment or just ungrazed pasture will force those rare species to leave. For further details, please contact Eugenie Regan at eregan@biodiversityireland.ie.

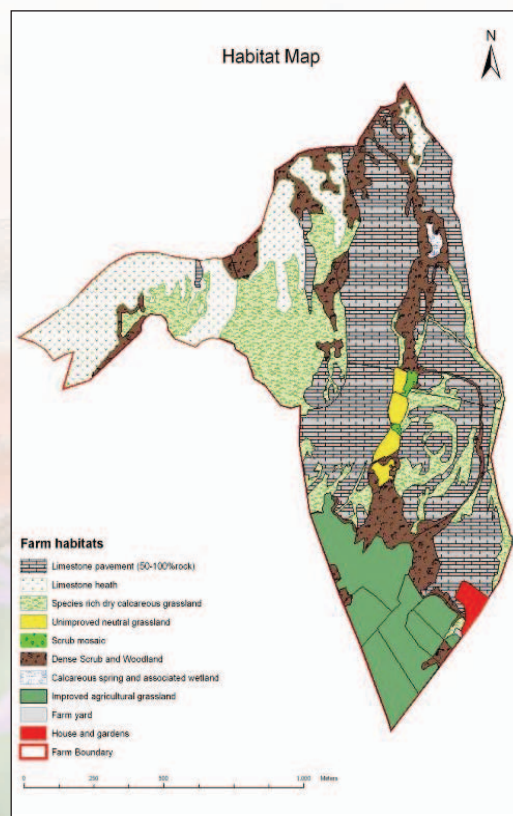
Agricultural Monitoring

The varied role of livestock in the Burren – food production and grassland management – ensures their pivotal importance to both farmers and conservationists. It is therefore essential that these animals are kept in good health so that they can continue their positive role. On the LIFE farms there are a total of 583 suckler cows (average 34 per farm), 73 Dairy cows, 265 1-2 year old cattle and 450 sheep (average figures). BLP staff carefully monitor the condition of cattle on winterages, calculating condition lost over the winter. This is complemented by sampling and analysing animal blood, and even animal faeces, as well as a detailed analysis of their food intake (forage and feed) to ensure that theirs is a healthy, balanced diet.

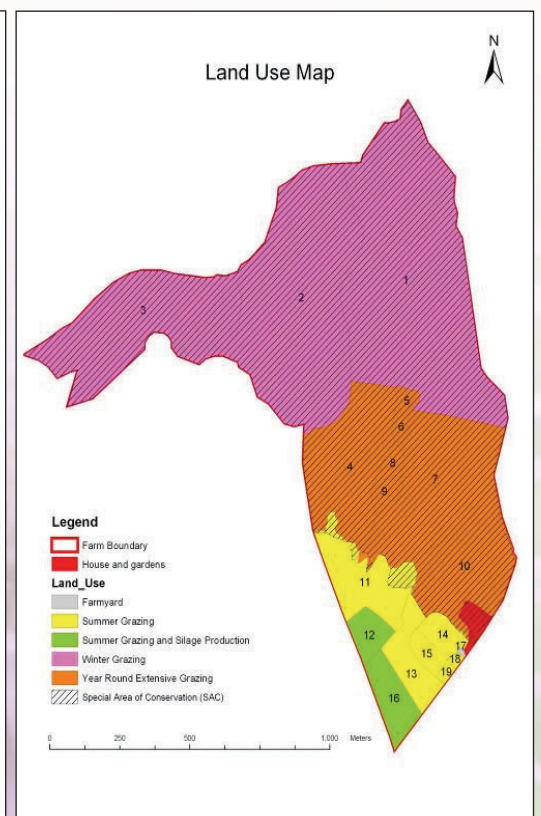
The economic health of the farmer is another important consideration in farming for conservation, and all farmers take part in the National Farm Survey, allowing the economic implications of BLP actions to be assessed.

Using Geographic Information Systems (GIS).

To date the BurrenLIFE monitoring programme (assessing the socio-economic, environmental and agricultural affects of project actions) has collected large amounts of data on monitor farms in the Burren. In order to manage such large data sets the BLP are utilizing geographic information systems. These are computer programs which are capable of capturing, storing, analysing and displaying data collected at different locations. For example when monitoring scrub removal actions, GIS allows the BLP to produce maps of scrub removal areas, calculate areas of scrub removed and costs per unit area. At the farm planning stage, GIS is used to produce land use (map 1) and habitat (map 2) maps of farms providing invaluable information to plan project actions on a farm by farm basis. GIS also allows us to compare aerial images over time.



Sample Habitat Map of a BurrenLIFE Farm



Sample Land Use Map of a BurrenLIFE Farm

Working together – A Model of Partnership Work

Introduction

One of the core operating principles of the BLP is that of partnership. This principle relates not only to the project partners and supporters, but also to the partnership with farmers, scientists, conservationists and others. Fostering these many partnerships is very important, and is the essence of sustainable rural development.

Views of the Project Partners In general, the project beneficiary and partners have played a very positive and supportive role in the project operation. The three groups each bring a different but essential dimension to the work of the BLP and its perception locally and nationally.

NPWS Dr. John Cross, from the NPWS Research Section, has noted that the ecological and socio-economic survey work of the Project Team has provided an excellent baseline for monitoring the changes in land-use which are being introduced, including the introduction of new grazing regimes. NPWS local staff have provided considerable technical and administrative support to the targeted programme of scrub removal and other works.

Burren IFA Mr. Michael Davoren, Chairperson, has noted that the strong competition for selection to be one of the 20 LIFE farms indicates the wide-spread interest of farmers in this valuable work. In conjunction with the BLP, the Burren IFA has set up the 'Burren Farmers for Conservation Group' with members drawn from through-out the Burren. He also noted that there is great interest in the Burren Beef & Lamb Producers Group and the idea of farmers taking ownership of the branding their own produce.

Teagasc Mr. Sean Regan, Environment Programme Manager for Teagasc, has emphasised the organisation's commitment to the partnership that has been established with the Burren IFA and the NPWS. Teagasc's involvement with the BLP has included the development of farm plans, the formulation of LIFE concentrate ration, the implementation of new grazing regimes and the participation of LIFE farmers in the national farm survey and the first ever 'Animal health on conservation grasslands workshop in Ireland.' Teagasc, together with NPWS, view the BLP as a 'blue print' and as such the results from this project are not only relevant to the future development of sustainable farming systems in the Burren, they are relevant to the future development of agri-environmental schemes and sustainable agricultural management practices on high nature value farmland areas across the country.

The EC and the EMT – Sustaining the Natura 2000 Network

The BLP enjoys an excellent relationship with the External Monitoring Team (EMT) and was delighted to host the visit of Dr. Lynn Barratt in June 2007. Dr. Barratt is an international consultant and her visit gave the BLP the opportunity to reflect on the work done and plan future strategies. The BLP reports annually to the EC via the EMT and this year it was time for the main interim report of the project (upon which much of this newsletter is based).

Your Role

The BLP is very much a team effort. It relies heavily on the support of the people of the Burren and beyond to realise its ambitions. The BLP would strongly urge all Burren farmers to support the project by telling other people about the work of BLP, by contacting the project office with ideas and information, and by attending project meetings and events. This is a critical time for the Burren and this work will only succeed if farmers and other members of the Burren community continue to fully support the BLP.

Burren Producers Group

A Quality food From A Quality Environment

The Burren Beef & Lamb Producers Group (BBLPG) was established in March 2007 with Mr Thomas Holmes (LIFE Farmer) as Chairperson. The Group underwent intensive training from March to May 2007. This training was financially supported by RRD LEADER in Co. Clare. The vision of the Burren Beef & Lamb Producers Group (BBLPG) is to become the leading producer of quality Burren beef and lamb. All member farmers actively farm for conservation in the Burren ensuring the long-term sustainability of the Burren via the production of 'conservation grade' quality beef and lamb. In addition, they manage their farms to enhance the local biodiversity of the Burren. Their core commitment is to produce quality food from a quality environment. The focus of the Group to date has been on the sale of the Burren lamb but as of mid September 2007 Burren conservation grade Beef went on sale. Lamb and Beef orders can be placed via burrenproducers@eircom.net or contact 065 708 9000. All products are sold fully butchered and presented in individual cuts in freezer-ready bags.



Burren Producers Group with Minister Sargent

Photo No. 6

Burren Farmers For Conservation The BFFC is the main project - farmer liaison group. It contains one or more farmer representatives from the 8 Burren parishes. Meetings of the group are held quarterly. So far meetings have been well attended and have proven to be a good opportunity to share ideas and opinions on the BLP and related issues, and also for the broader farming community to discuss any issues of concern regarding the BLP.

Burren Contractors Database

Following a series of public advertisements and promotion in late 2006, a database of skilled and semiskilled workers was compiled by the BLP. Over 100 contractors are now listed on this database, most of them local residents, the majority of them members of the farming community. Up to 40 of these workers have been used to undertake project actions. This has proven very successful in terms of meeting work targets, supporting the local economy and actively engaging farmers in conservation work. The Burren contractors database is also available to, and has been used by, the broader farming community through the project office. This will be a resource of great significance in the Burren beyond the lifetime of the BLP.



Dr. Sharon Parr Farm Demonstration Event - June 2007

Photo No. 7

News and Events

The 'Old Irish' Goat

The goat is an animal closely associated with the Burren. Large herds of feral (once farmed, now wild) goats are commonly seen. While many of the Burren's feral goats are recent additions, abandoned by their owners, experts have identified a small number that represent a rare breed of indigenous 'old Irish goat' among these herds. These old goats represent an invaluable and unique genetic resource, but their status is now described as critical due to ongoing interbreeding with 'tame' goats, and also because of the culling of goat herds.

The BLP is working with one local farmer to erect a secure 20 acre enclosure within which a breeding population of Old Irish goats may be kept. This pilot project will not only support the conservation of the genetic resource, but will also allow the BLP to monitor the impact of these feral goats on scrub and grasslands, and look at their use as a 'conservation grazing' tool. The BLP have also called on the relevant state agencies to play their part in the pro-active management of the broader population of feral goats, addressing the legitimate concerns of local farmers.



Photo No. 8



Photo No. 9

Minister Trevor Sargent TD with Project Team

Ministerial Visit to the Burren

The Minister of State Trevor Sargent T.D. came to the Burren in September in his first official engagement in the county – to visit the BLP and to officially launch the Burren Producers Group. Speaking to a crowd of over 100 people in Gregans Castle Hotel, the Minister applauded the efforts of the Producers Group in continuing to farm and to produce quality food to the highest possible standard. He also urged consumers to help sustain farmers on the land by buying local Burren beef and lamb, thus protecting the Burren's heritage.

REPS IV

The new REPS IV scheme was recently launched by the Dept of Agriculture, Food and Forestry. Of particular interest to Burren farmers is the newly worded 'Burren Agreement'. Following a submission made by the BLP to the Department, the winter grazing season has been extended to include the month of September, while restrictions on the summer grazing of winterages have also been eased. Full details of the new Burren Agreement for REPS IV are available on www.agriculture.gov.ie. The DAF have also undertaken to review the Burren REPS agreement once the BLP makes its final recommendations.

Rubbish in the Burren

Workers for the BLP recently removed almost 1 tonne of rubbish from two Burren farms. The rubbish, ranging from cans to bottles, used nappies to kitchen sinks, was dumped by passers by over many years.



Photo No. 10

This dumping not only constitutes a visual obscenity in one of Ireland's foremost beauty spots, but is a danger to livestock and wildlife. The BLP are grateful to Clare County Council for their assistance in disposing of this refuse and would urge the public to be vigilant in monitoring illegal dumping in the Burren.

Workshop with Regional Vets & District Veterinary Officials

The BLP held a highly important workshop with Burren vets and District Veterinary Office officials in September 2007. The purpose of the workshop was to share practical information and experience on animal health and nutrition issues, with particular reference to the Burren and the work of the BLP. Over the past three years the BLP has amassed a large amount of information relating to animal diet (forage and fodder values), health (annual questionnaires, blood samples) and condition (condition scoring data) on Burren winterages and this information was presented and discussed at the workshop. The experience of local and regional vets coupled with the work of the BLP is helping to inform the bigger picture regarding the practical issues around grazing animals on agriculturally marginal areas like the Burren. The workshop concluded that the systems of outwintering cattle with BLP ration should be a healthy, cost effective option for Burren farmers.

Hundreds Greeted At National Ploughing Championship 2007

The BLP participated in the three days of the National Ploughing Championship in September. The BLP was kindly hosted in the tent of the European Commission, DG Environment, and participated in a number of workshops and seminars organised by the EC. Mr. Patrick McCormack (LIFE-Farmer) made a presentation together with the BLP Finance & Operations Officer Mr. Ruairí Ó Conchúir on the experience of the BLP and participated in a workshop on LIFE + funding options. Burren IFA Chairperson, Mr. Michael Davoren presented with BLP Manager Dr Brendan Dunford on Natura 2000 and Rural Development funding. The BLP also welcomed hundreds of farmers and non-farmers to the stand over the three days. With over 150,000 people attending the event, this was a great opportunity for the BLP to highlight its work and make linkages at National and European level, people who will be critical in ensuring that the work of the BLP continues beyond 2009. The BLP would like to express its sincere gratitude to all local Burren farmers who called to the BLP stand and for their support during the Ploughing. The BLP would also like to sincerely thank the EC for hosting the BLP at the event and EC staff in Brussels & Dublin in organising the event and supporting the BLP.



Photo No. 11

Ruairí Ó Conchúir (BLP), Micheal O'Briain (EC), Michael Hamell (EC), Michael Davoren (IFA), Brendan Dunford (BLP) and Ciarán O'Keefe (NPWS) at the National Ploughing Championship September 2007.

Conference 2008

The BLP is planning a major international conference titled 'Farming for Conservation – Supporting the future'. The Conference will take place in Ennistymon, Co Clare in February 2008. This three day conference will explore the theme of 'farming for conservation' in the unique environment of the Burren, looking in particular at the support requirements of farmers in similar heritage-rich but agriculturally limited regions all across Europe. Speakers from other European countries will share their experience and knowledge of conservation farming, while field trips to BurrenLIFE project farms will also take place. For more information, please contact info@burrenlife.com

Education, Information and Awareness

Heritage Education

The BLP has completed a very busy year in terms of Heritage Education in the Burren. This year has seen visits to and field trips with local schools (6 primary and 3 secondary) combined with lectures and field trips for the wider community. This work is co-ordinated by Mr. Tony Kirby. Highlights of the year included a very successful lecture series at the Burren Centre in Kilfenora with star performances from LIFE farmers Mr. Patrick McCormack and Mr. Jim Nagle. As part of the BLP's wider education programme, Project Team members have supported educational initiatives with NUIG, UCC and a number of local schools, as well as hosting talks and walks for Heritage Week 2007. Invitations to address farmer groups in Kerry, Mayo, Wicklow and Waterford, as well as Councillors in North Clare were accepted.



Heritage Education Talk



Burren visit by International Farm Managers Association July 2007

Visitors

The BLP hosted a number of international Conference Groups and others during the year. Delegates from the Burren Law School visited a Life farm in May, while members of the The Heritage Council Archaeology Committee visited the BLP in June, following up on a Heritage Council report looking at the impact of scrub on the archaeology of the Burren. Delegates from the International Farm Managers Association visited the BLP in July, as did delegates from The International Association of Vegetation Scientists, while the European Island Farm Landscapes Leader+ Transnational Project visit in September. During the summer, the BLP was also delighted to facilitate a visit by EU Ambassador to the US and former Taoiseach John Bruton. On all occasions there was considerable interest in the BLP approach and the work completed by the BLP.

Demonstration Days

A number of farm demonstration days took place on Burren farms this year. A look at winter feeding and other issues took place on the farms of Mr. Patrick Fogarty and Mr. Harry Jeuken in February, while two summer demonstration events took place at Slieve Carron where Mr. Frank Kelly farms his suckler herd. The BLP also participated in an Organic Open day event on the farm of Mr. Patrick McCormack.

Making News

The work of the BurrenLIFE project continues to enjoy excellent media coverage. Regular updates on the BLP as well as news items on the BLP featured in the two main Clare Papers – the Clare Champion and the Clare People, supplemented by several pieces on Clare FM. The BLP also received favourable write ups in National Papers such as the Irish Farmers Journal, The Irish Times and The Irish Examiner. The BLP has also featured on RTE Radio's 'Farm Week' and Quantum Leap, complementing the airing of several television pieces on the project in 2006.

Calling all Burren farmers

The BLP would love to hear from any Burren farmers in order to share information with them about farming in the Burren. In the coming months, project staff will be organising local focus groups to discuss the past, present and future of farming in the Burren. If you are farming in the Burren and would like to support the work of the BLP – and a future for farming in the Burren – please call us at 065-7089000, or drop in to our offices in Carron.

Registering on Project Website www.burrenlife.com

Please feel free to register your details and receive regular updates on the BLP as it works with Burren farmers to develop a new model for sustainable agriculture. The BLP posts all project updates and news on the BLP website www.burrenlife.com.

Planned Work 2008

Now in its penultimate year, there is no let up in sight in terms of the work planned for the BLP. Though much of the scrub removal work is complete, significant work still remains, in particular addressing the regrowth from cut areas. Maintenance work on walls, watering systems and trackways also remains to be done. Grazing and feeding regimes will continue to be refined over the second outwintering season, based on the findings of our detailed monitoring programme and feedback from the participating farmers.

The monitoring programme is now in full swing, with ongoing work planned in ecological (habitats, scrub) and agricultural (conditions, bloods, faeces, forage values) monitoring. The first year's data from the National Farm Survey will be coming on stream shortly. Farmer liaison will be a major focus over the winter months. Finally, there will be plenty of talks, walks, workshops, demonstration days and other events are planned, including an international conference in February 2008, so there is a lot to look forward to in the coming months!

Contact Us.....

Get in touch with the Project in any of the following ways:

Write or Call into the Project Office:

BurrenLIFE, Old School House, Carron, Co. Clare.

Telephone: 065 708 9000

E-mail: info@burrenlife.com

Website: www.burrenlife.com

Photos credits: Sharon Parr (No.1), Ruairí O Conchuir (No.2,4,7 & 12),

Brendan Dunford (No. 3,5,8 & 10), all other images – BLP.

If you wish to be placed on our mailing list for regular Project Updates, Newsletters and Reports, please send us your details or register online on our website: www.burrenlife.com

Getting In Touch
With Us Is Easy!

